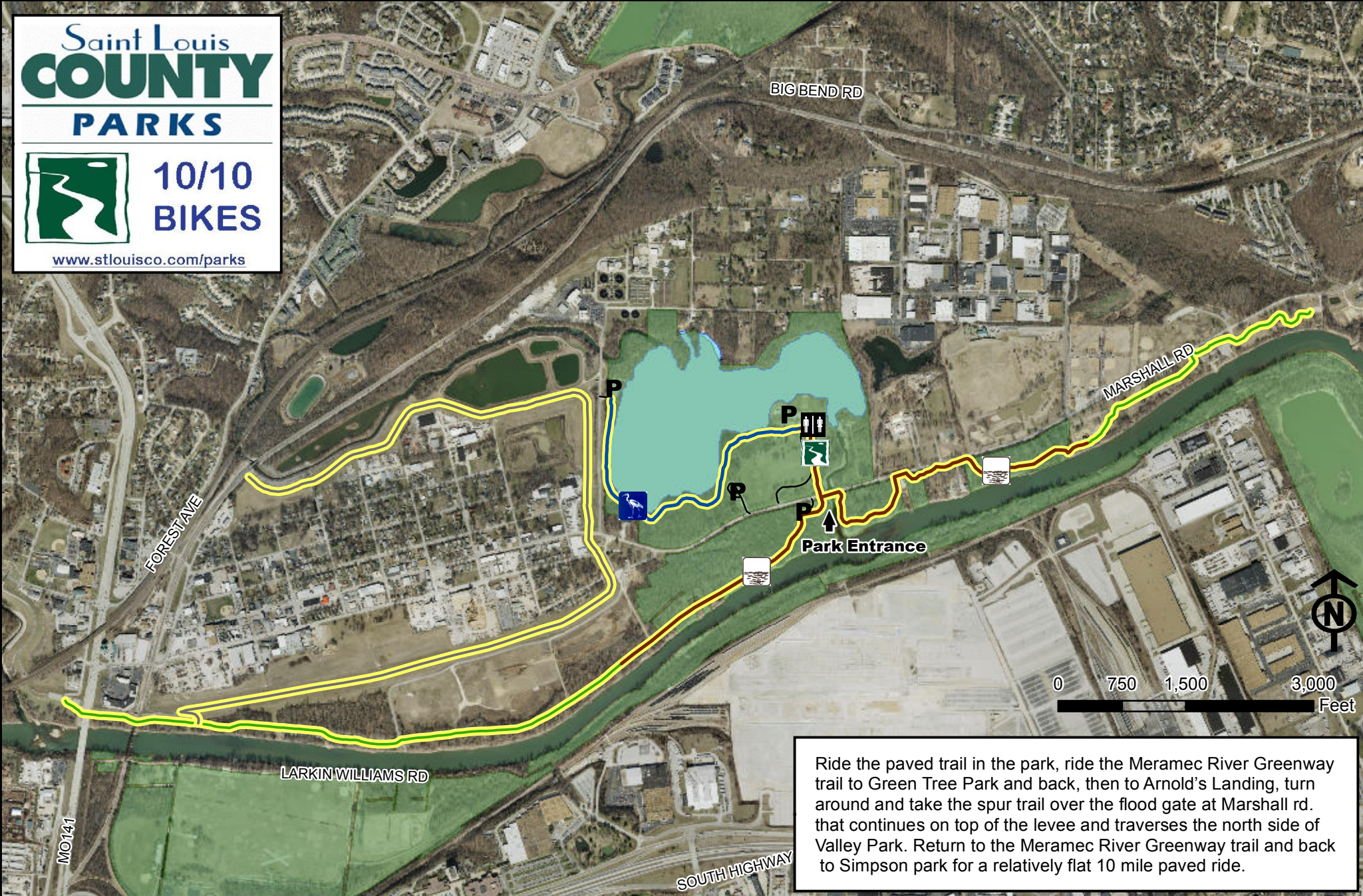


Saint Louis
COUNTY
PARKS



**10/10
BIKES**

www.stlouisco.com/parks



Ride the paved trail in the park, ride the Meramec River Greenway trail to Green Tree Park and back, then to Arnold's Landing, turn around and take the spur trail over the flood gate at Marshall rd. that continues on top of the levee and traverses the north side of Valley Park. Return to the Meramec River Greenway trail and back to Simpson park for a relatively flat 10 mile paved ride.



Simpson Park



1234 Marshall Rd.



St. Louis, MO



63088



-  River Walk Trail
-  Blue Heron Trail

-  Levee Trail
-  Meramec River Greenway

-  10/10 Bike Ride
-  Restroom

-  Trail Head
-  Parks Property