



St. Louis County ARPA Community Needs Survey Final Results

STLC Community Needs Survey

The St. Louis County Community Needs Survey was open from February 25 – March 25, 2022. The County received a variety of responses from both the online and paper survey formats. Many different types of community engagement were employed to promote the survey.



3,346
Total Respondents

3,281
Online Respondents

65
Paper Respondents



1 Month
Length of Survey
February 25 – March 25, 2022

4 Languages
In which the Survey was
translated to and available

6 Town Halls
Virtually and in Person



**Street
Canvassing**
By Various Nonprofits and
Grassroots Organizations

**News and
Radio**
To Promote Survey

**Survey Toolkit
Distributed**
To Nonprofits and Community
Partner Organizations

Demographic Snapshot: Community Needs Survey vs. Census Data

Survey Responses



60%

Of respondents fell within the **18 to 64 Age Range**



57%

Of respondents were **Female**



58%

Of respondents identify as **Caucasian/White**



17%

Of respondents identify as **African American/ Black**



89%

Of respondents stated **English as their Primary Language**



78%

Of respondents are **homeowners**

Census Data (2020), St. Louis County



60%

Of respondents fell within the **18 to 64 Age Range**



53%

Of respondents were **Female**



65%

Of respondents identify as **Caucasian/White**



24%

Of respondents identify as **African American/ Black**



91%

Of respondents stated **English as their Primary Language**



68%

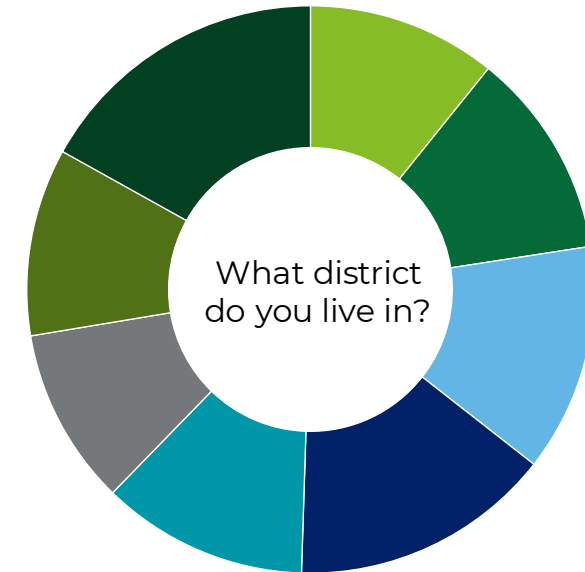
Of respondents are **homeowners**

Demographic Responses: District of Residence

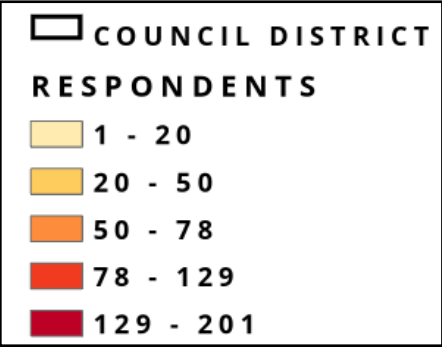
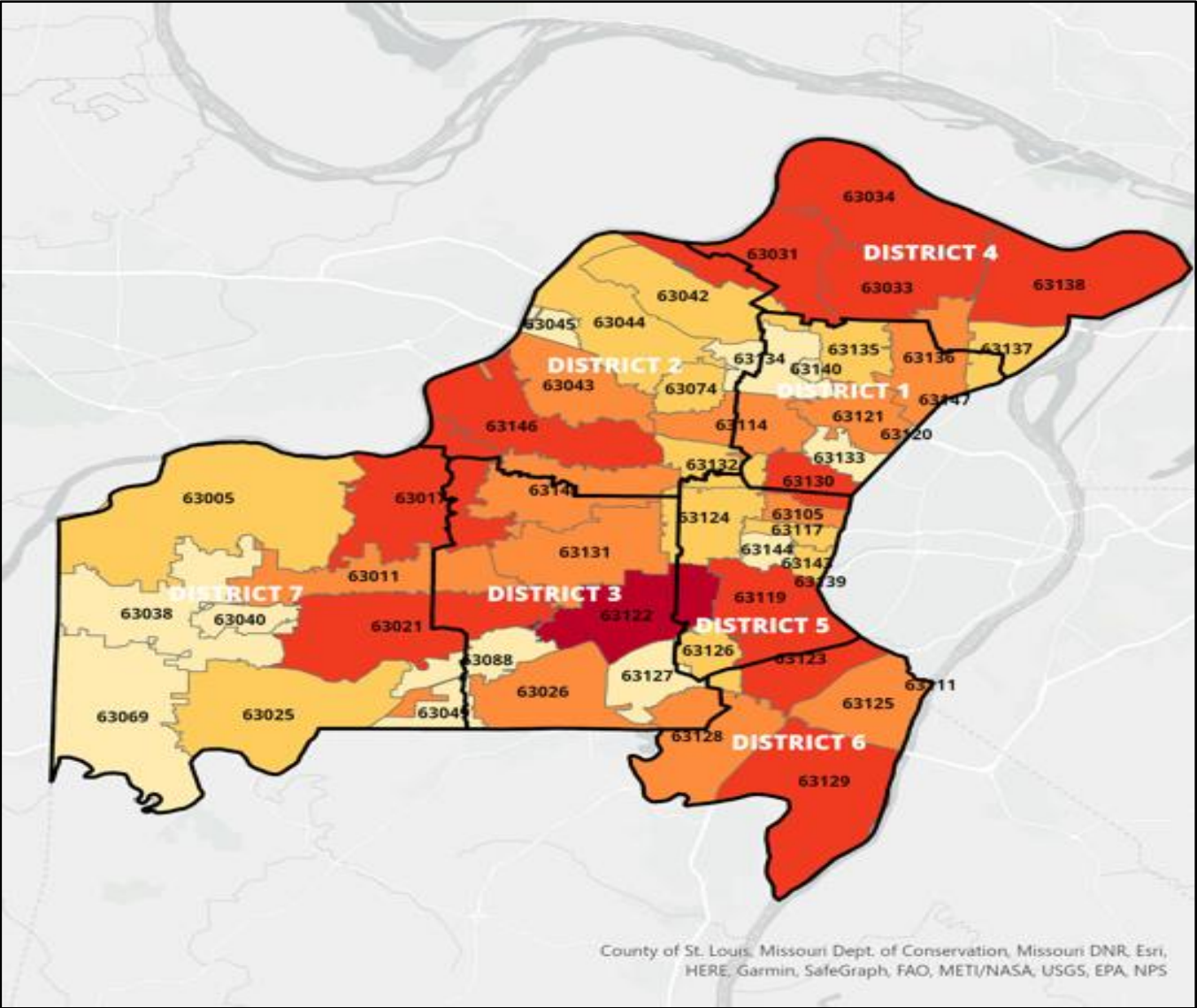
Survey respondents who noted that they did not know their district of residence, but noted their postal code, have been assigned to their respective district

District of Residence Response	Count
District 1 (Chair Rita Days)	361
District 2 (Councilwoman Kelli Dunaway)	394
District 3 (Councilman Tim Fitch)	435
District 4 (Vice Chair Shalonda Webb)	500
District 5 (Councilwoman Lisa Clancy)	394
District 6 (Councilman Ernie Trakas)	338
District 7 (Councilman Mark Harder)	358
Non-responsive*	566
Total	3,346

* Non-responsive includes respondents who did not answer the question and those who replied, "I don't know." Of these, 366 did not note their postal code in their survey, while 200 noted a postal code outside of St. Louis County.



Demographic Responses: Postal Code of Residence Heat Map

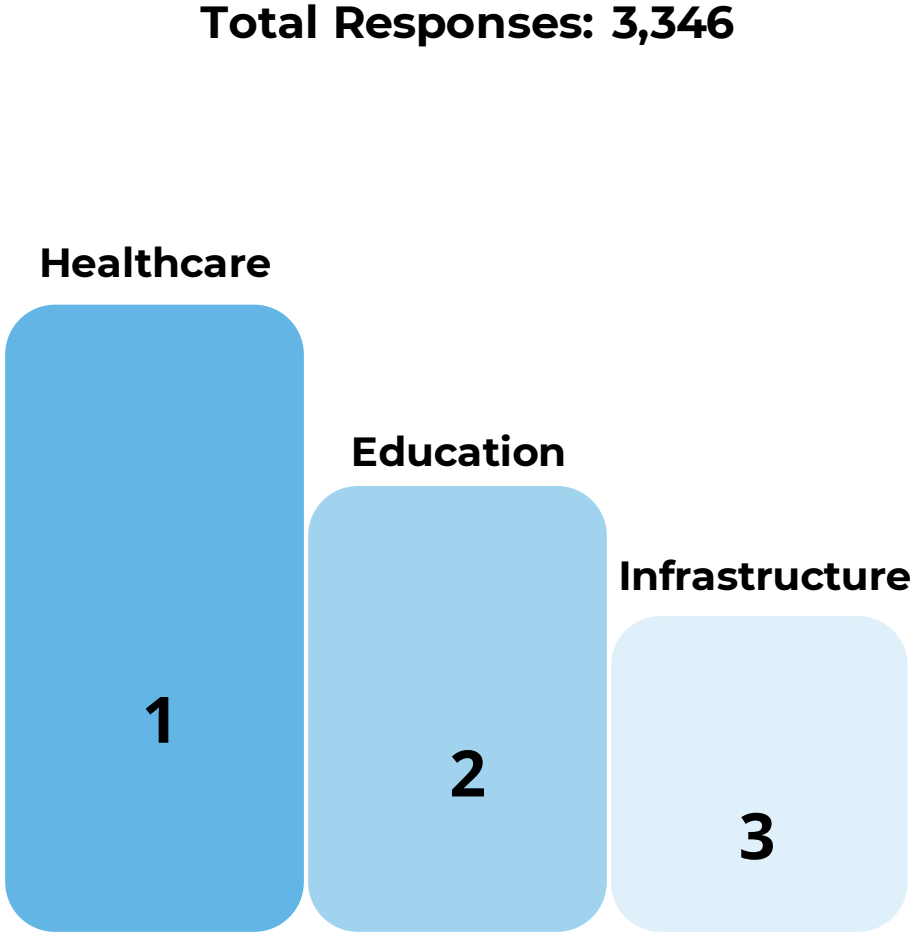


County of St. Louis, Missouri Dept. of Conservation, Missouri DNR, Esri, HERE, Garmin, SafeGraph, FAO, METI/NASA, USGS, EPA, NPS

Category Top Priority Selections

Percentage of respondents who selected the Category as the top priority (calculated by dividing #1 ranking per Category by number of survey respondents)

Category*	Percentage of respondents selected as top priority
Healthcare and Public Health	19.75%
Education and Childcare	17.15%
Infrastructure	13.39%
Mental Health	13.06%
Household Assistance	11.66%
Negative Economic Impacts	10.64%
Government Services	6.37%
Other	4.84%
Total**	96.86%



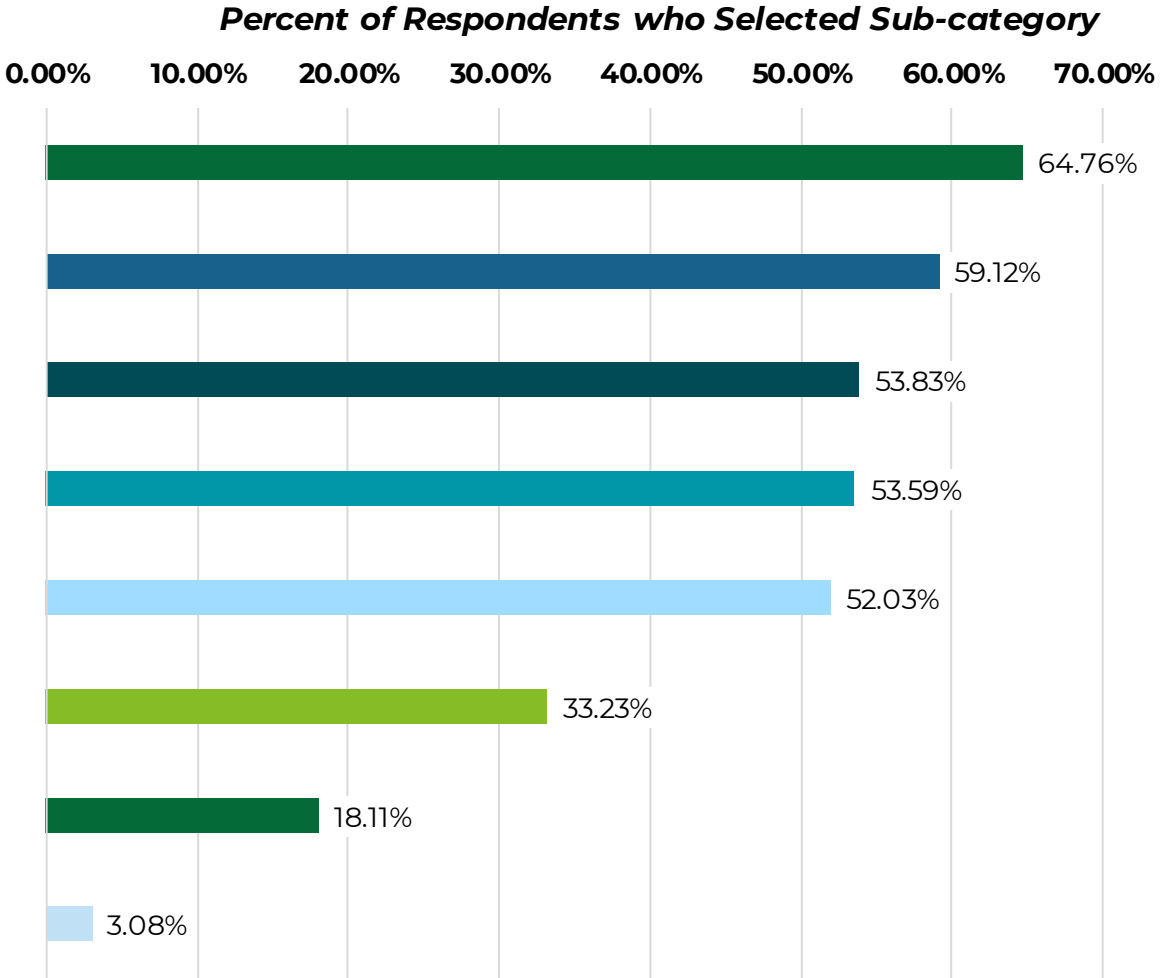
*Categories correspond to ARPA Fiscal Recovery Fund Expenditure Categories. As such, Older Adults is not a Category that factors into the ranking.

**Total percentage of top priority selections does not include all respondents because the survey question did not require a response.

Healthcare and Public Health: Sub-categories to Address

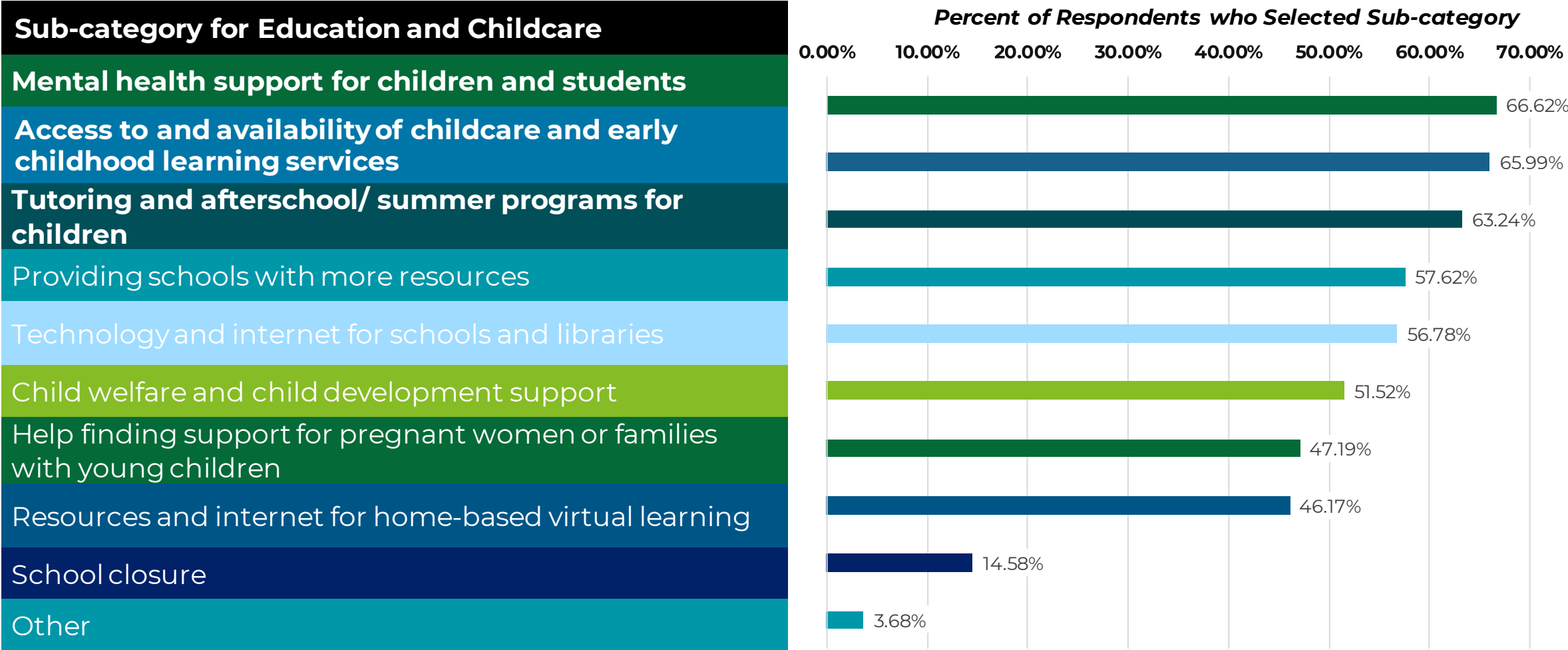
Sub-categories are ranked in order of the number of times the sub-category was selected across all surveys. The percentage is calculated by dividing the number of times the sub-category was selected by the total number of survey respondents.

Sub-category for Healthcare and Public Health
Access to and availability of healthcare services
Support for public healthcare workers (mental health, stress management)
More social workers to help community members with public benefits or services
Help with finding and applying for public benefits and services
More doctors, nurses, health care workers, and emergency medical services
COVID-19 prevention and response measures (e.g., testing, masks, vaccination, treatment)
More information about COVID-19 (where to get testing, community spread, COVID-19 services)
Other



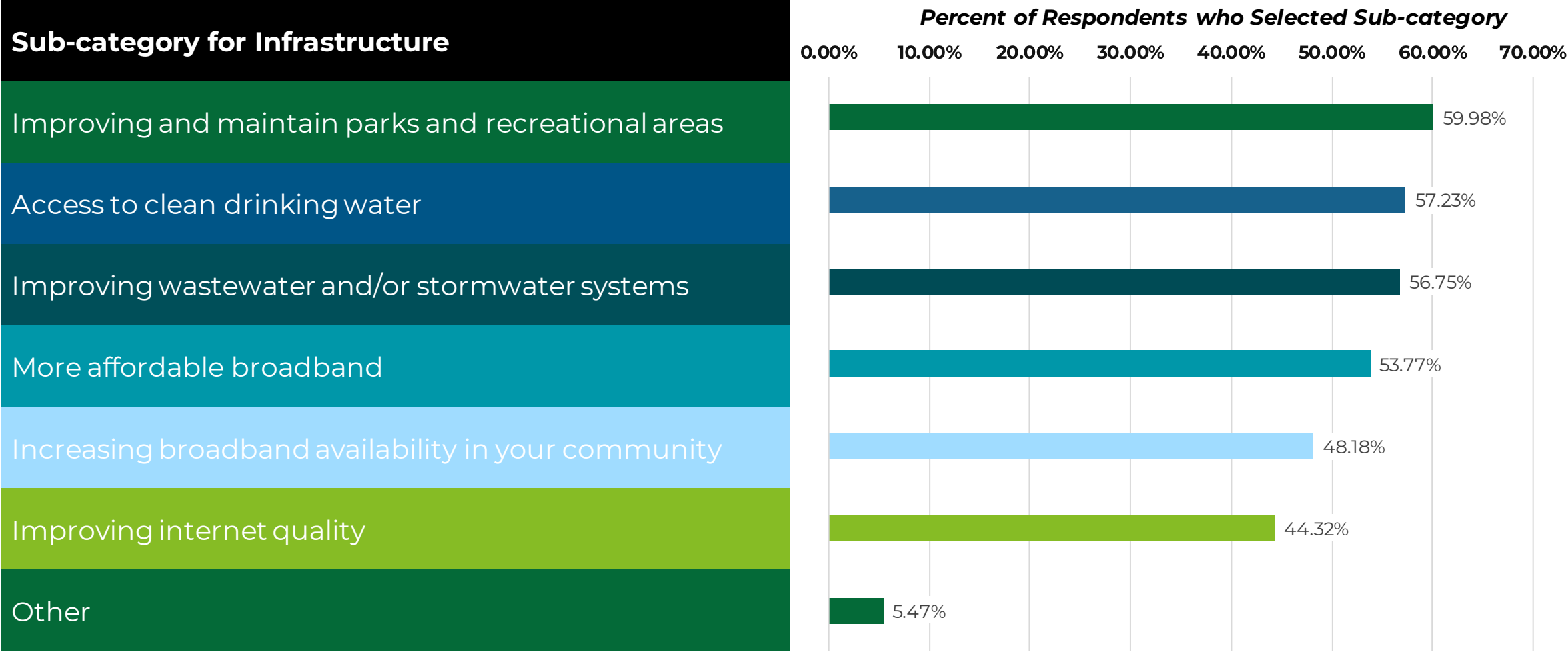
Education and Childcare: Sub-categories to Address

Sub-categories are ranked in order of the number of times the sub-category was selected across all surveys. The percentage is calculated by dividing the number of times the sub-category was selected by the total number of survey respondents.



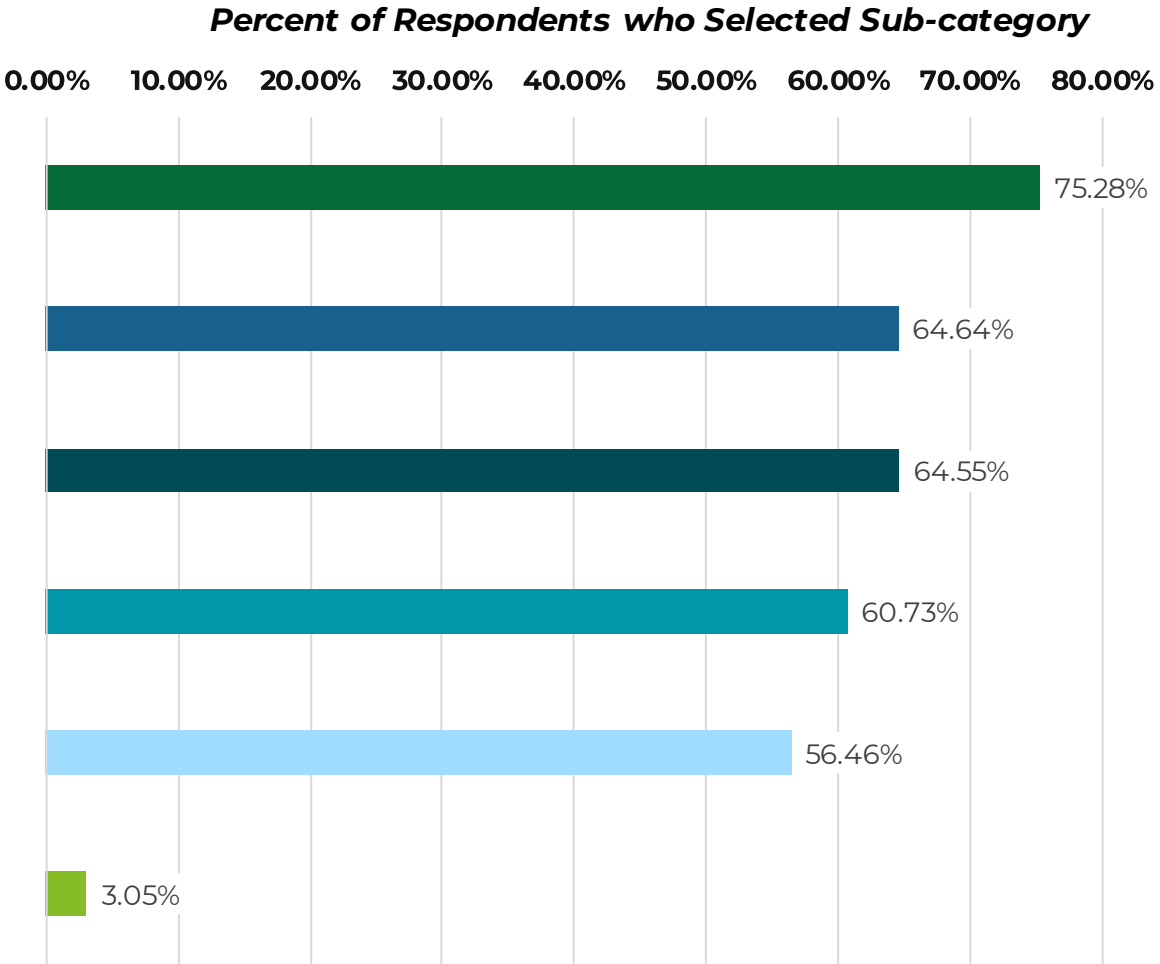
Infrastructure: Sub-categories to Address

Sub-categories are ranked in order of the number of times the sub-category was selected across all surveys. The percentage is calculated by dividing the number of times the sub-category was selected by the total number of survey respondents.



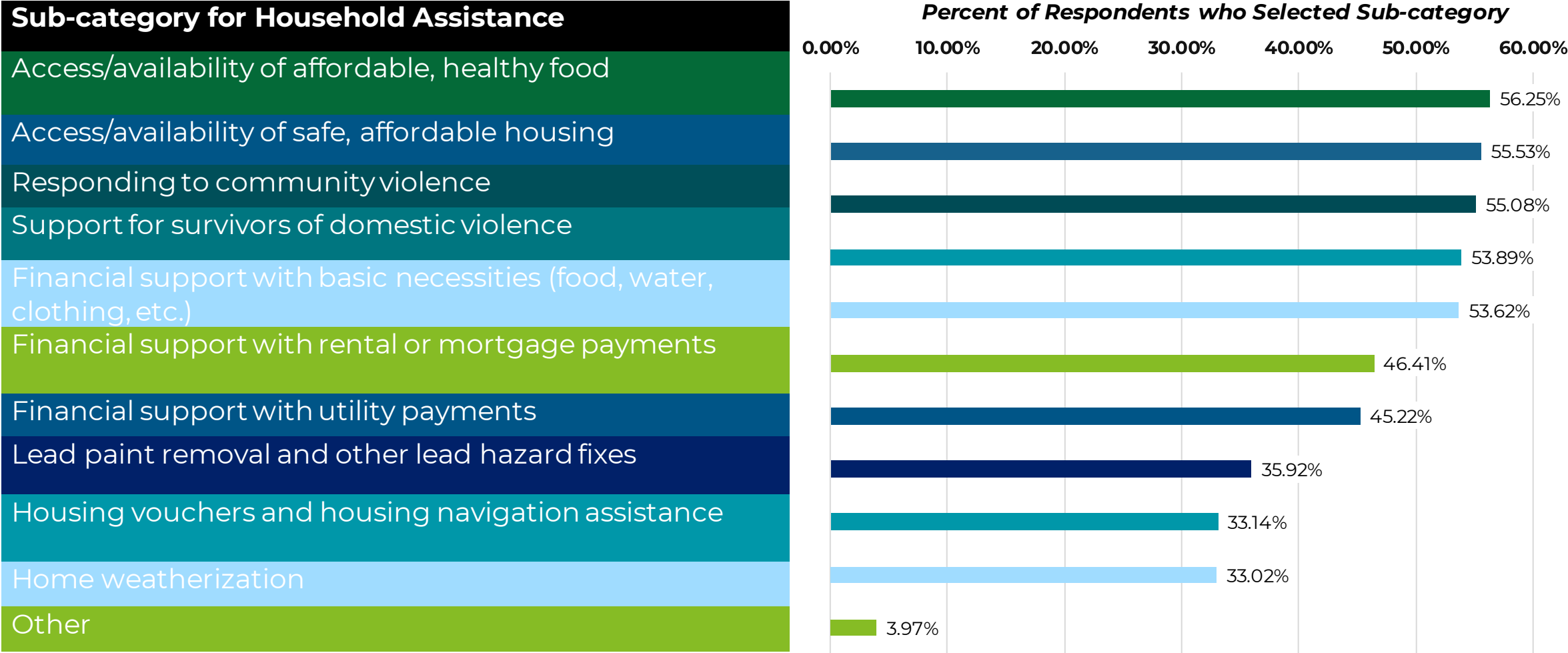
Mental Health: Sub-categories to Address

Sub-categories are ranked in order of the number of times the sub-category was selected across all surveys. The percentage is calculated by dividing the number of times the sub-category was selected by the total number of survey respondents.



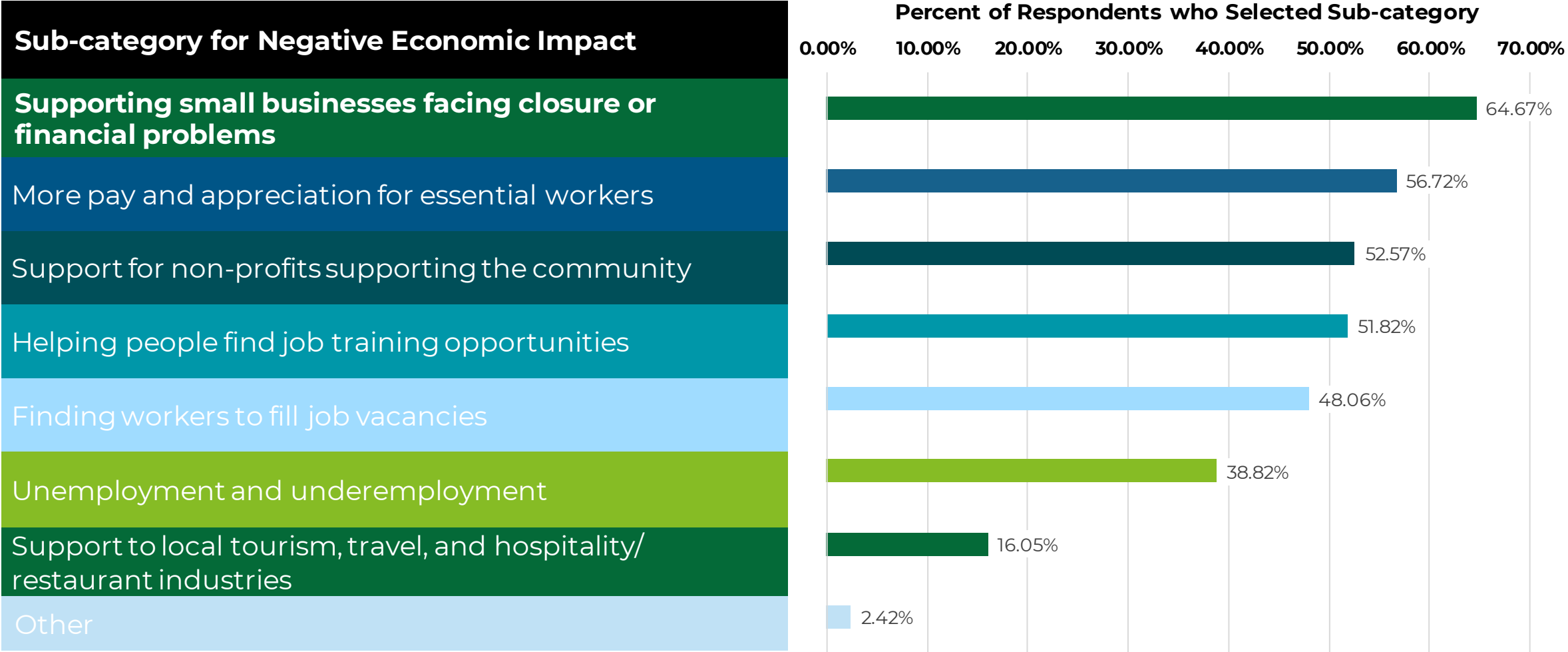
Household Assistance: Sub-categories to Address

Sub-categories are ranked in order of the number of times the sub-category was selected across all surveys. The percentage is calculated by dividing the number of times the sub-category was selected by the total number of survey respondents.



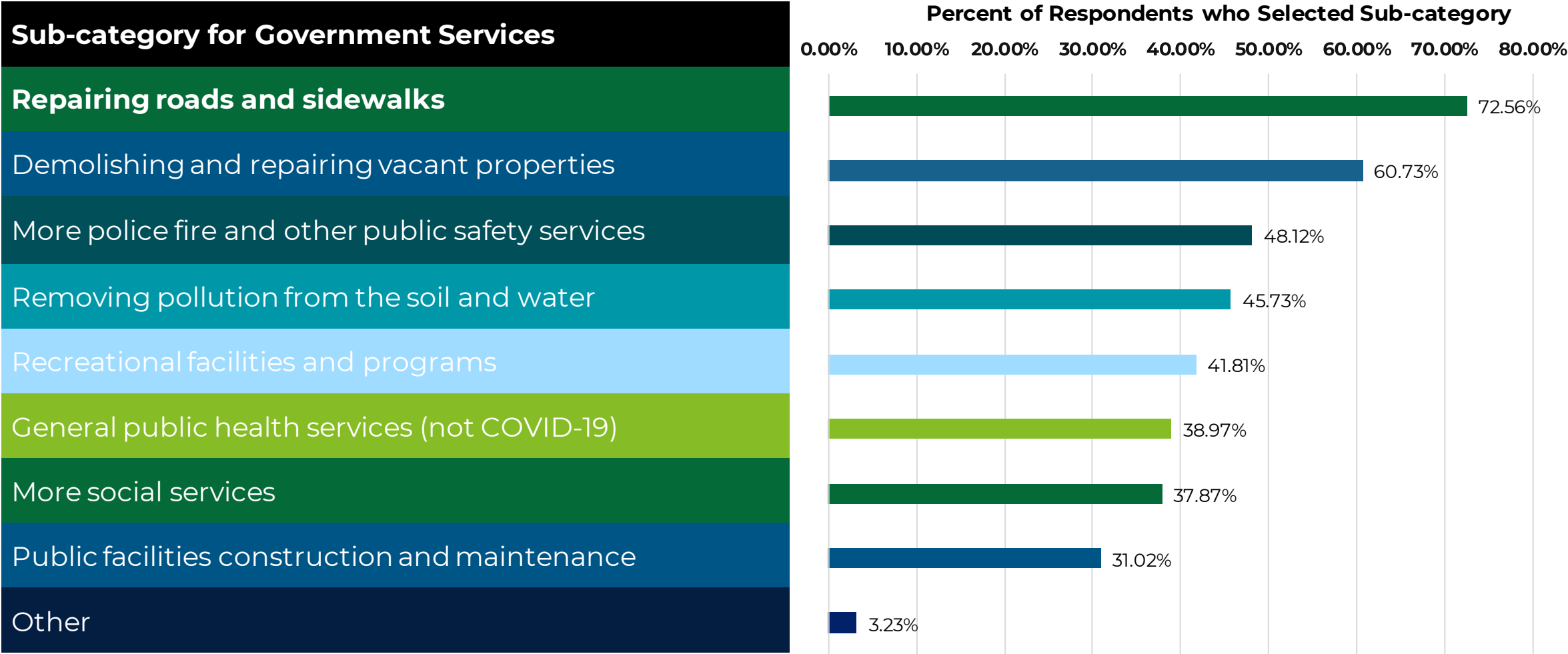
Negative Economic Impact: Sub-categories to Address

Sub-categories are ranked in order of the number of times the sub-category was selected across all surveys. The percentage is calculated by dividing the number of times the sub-category was selected by the total number of survey respondents.



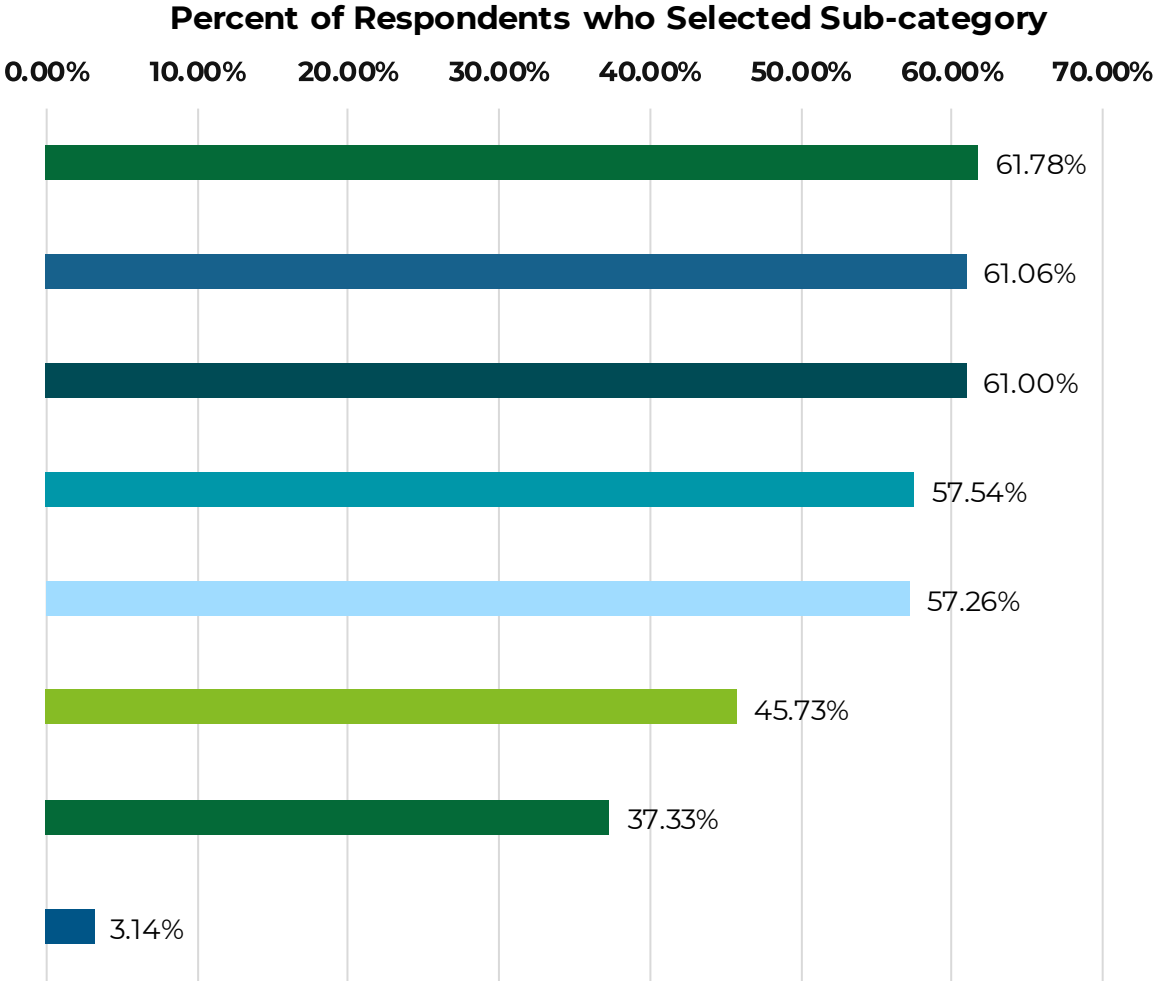
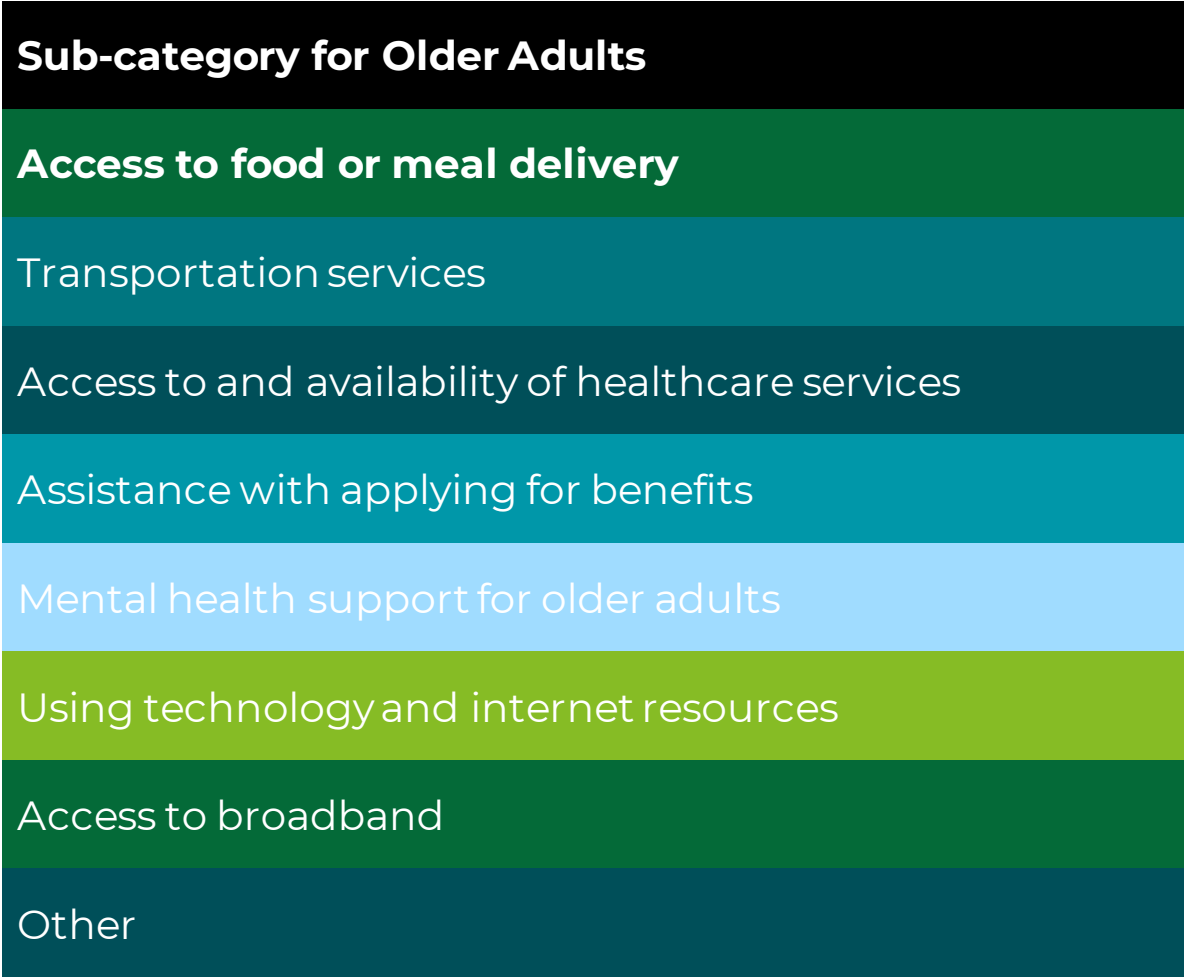
Government Services: Sub-categories to Address

Sub-categories are ranked in order of the number of times the sub-category was selected across all surveys. The percentage is calculated by dividing the number of times the sub-category was selected by the total number of survey respondents.



Older Adults: Sub-categories to Address

Sub-categories are ranked in order of the number of times the sub-category was selected across all surveys. The percentage is calculated by dividing the number of times the sub-category was selected by the total number of survey respondents.



Top 10 Sub-categories to Address

Percentage of respondents who selected the sub-categories to address (calculated by dividing count of sub-category selections by total survey respondents)

Sub-category	Percentage
Access to and availability of mental health services	75.28%
Repairing roads and sidewalks	72.56%
Mental health support for children and students	66.62%
Access to and availability of childcare and early childhood learning services	65.99%
Access to and availability of healthcare services	64.76%
Supporting small businesses facing closure or financial problems	64.67%
Access to and availability of substance abuse treatment services	64.64%
Access to and availability of suicide prevention services	64.55%
Tutoring and afterschool/summer programs for children	63.24%
Access to food or meal delivery for older adults	61.66%

Questions

